

# FOSSIL PREPARATION INFORMATION SHEET



## *LEARNING TO PREP DINOSAURS & MEGAFUNA FOSSILS*

Working on 95-90 million year old dinosaur bones or 50,000 to 100,000 year old megafauna bones is a very rewarding experience. Motivation, resourcefulness, patience, and persistent interest are important traits for a preparator. Having a good base of practical skills and knowledge is also a great start.

Preparation is not one skill but many. It begins when the fossil is excavated from the ground, continues in the laboratory, and never really finishes, because the specimen will require care throughout its life in the collections. It can involve careful digging with small and large hand tools and making plaster field jackets in the field; the use of hand, air and power tools in the lab; awareness of different materials and their characteristics in consolidation, adhesion, and molding and casting; the construction of ethafoam or fiberglass cradles for storage and display; the use of a microscope for preparation of very small fossils, taking lots of photos and creating digital files for 3D images.

Many of the same tools and resources are used to prep dinosaur and megafauna fossils but they are two very different prepping experiences. Both are extremely interesting to work on and you will easily become immersed in your work and the history surrounding it. It is almost like we cast a spell on you!!!

When you begin we will give you an induction which will give you background information on how the bones are found, dug out of the ground, brought back to the lab and how we prepare them. This will also include a WHS induction and introduced to ENHM staff. We will then be there to guide and supervise you as you learn how to prepare these prehistoric treasures.



# FOSSIL PREPARATION INFORMATION SHEET

---



## **BECOME AN HONORARY FOSSIL PREPARATOR**

If you complete ten days of dinosaur fossil preparation at the Eromanga Natural History Museum, you are then assessed to become an Honorary Fossil Preparator (Dinosaurs) and receive a Certificate of Achievement.

### Other Information:

- Must complete 10 days consecutive prep on either dinosaur or megafauna fossils.
- Free of charge once 10 days training is complete and assessed by an experienced ENHM Fossil Technician
- Refresher training required every 12 months
- Position may not be available during peak tourist season (May to Sept). More positions will be available during off-peak times.
- Registered ENHM volunteer fossil preparators with a minimum 10 days experience at the ENHM, prior to 1/1/2017, qualify as an Honorary Fossil Preparator depending on they specialized on dinosaurs or megafauna.
- Certificate of Achievement issued

## **PRICES**

Visit [Fossil Prep & Digs](#) and [On-site Stays](#) on the ENHM website for current prices.

**BOOKINGS ESSENTIAL** – [first fill in your preferred dates and send us your enquiry](#) and once your enquiry is approved, you will be requested to make full payment for your booking to secure your position.

Confirmation email will be sent once the full pre-payment is paid plus more information about everything else you will need to know about the Fossil Prep.

For more information, read on or contact us on 07 4656 3084.

## **STAY ON-SITE**

- 4 star accommodation – Cooper's Country Lodge
- 3 powered caravan sites for fully self-contained caravans or motorhomes
- 3 unpowered caravan sites for fully self-contained caravans or motorhomes

RV Dump Station at Eromanga 2.8kms away.

# FOSSIL PREPARATION INFORMATION SHEET



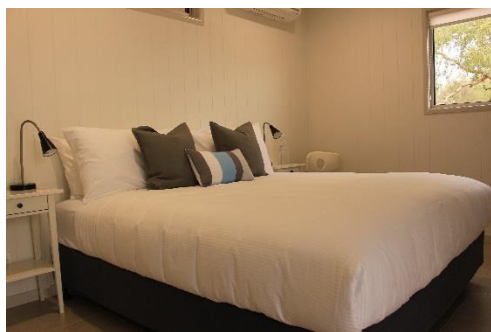
**COOPER'S COUNTRY LODGE** - P: 07 4656 3084 E: [info@enhm.com.au](mailto:info@enhm.com.au)

W: [http://www.enhm.com.au/Stay/On-site Stays.htm](http://www.enhm.com.au/Stay/On-site%20Stays.htm)



Stay on-site at Cooper's country Lodge. The Lodge has only recently opened and offers you a stay equivalent to what you would expect from 4 star at an affordable price. Self-catering (see page 6) is also great option, using the Lodge facilities and local food stores. Visit the ENHM webpage [On-site Stays](#).

The Outback Studio rooms offer a perfect base while you learn to prep dinosaur or megafauna fossils. Experience the Australian Outback and the home of Australia's largest dinosaur 'Cooper' while you enjoy the fresh air and the star filled night skies on-site in the Eromanga Natural History Museum Nature Reserve. The Outback Studio are semi-self-catering, self-contained and have a classic Australian character that sets the scene for a memorable and distinctive stay.



**COOPER'S COUNTRY LODGE DISCOVERY EXPERIENCE** - Fossil Prep/On-site Accommodation Package

Visit [Cooper's Country Lodge Discovery Experience](#) for more information and rates.

# FOSSIL PREPARATION INFORMATION SHEET

---



## COOPER'S COUNTRY LODGE FACILITIES

### Rates are per night and include:

- 1). Outback Studio Room
- 2). Self-catering facilities
- 3). 1 King or twin X Long Singles
- 4). Complimentary airport transfer from Eromanga
- 5). Check in time: 2.00pm    Check out time: 10.00am    Late check out: 1pm

### PROPERTY FACILITIES INCLUDE:

- Outback Dining Area including:
  - Alfresco area with BBQ
  - Dining Room
  - Large flat screen TV
- Laundry facilities
- Tour desk
- Free Parking

### ACCOMMODATION FACILITIES INCLUDE:

- Air conditioning
- Heating
- Private ensuite with shower
- Radio
- 3G Telstra Mobile reception
- Flat screen satellite TV (Free to air)
- All rooms include kitchenette with fridge, microwave, toaster, kettle
- Hair dryer
- Iron/Board
- Desk
- Complimentary tea and coffee & biscuits
- Fresh rain and treated water

**Special Information:** Airport transfers are available from Quilpie airport to the museum, contact the museum reception 07 4656-3084 for more information.

# FOSSIL PREPARATION INFORMATION SHEET



## SELF CATERING:

- ❖ Family Webber is available for use in the BBQ area. This is what we use to bake, grill or fry.
- ❖ No cooking in rooms other than in the microwave.
- ❖ Continental Breakfast
- ❖ Guest lounge, guest kitchenette (no oven, convection microwave only) and guest dining room
- ❖ Commercial kitchen available for hire for large groups
- ❖ Refrigeration/freezer, pantry space and basic cooking utensils provided for guests
- ❖ Personal food orders and delivery:
  1. Fresh groceries and meat can be ordered from Quilpie and paid for with bankcard payment over the phone.
  2. Costello Transport will deliver to the museum Tuesday (order Monday) and Thursday (order Wednesday) for a fee of \$5/box (this will be added to your room fees). Please advise the grocery stores, butcher or baker if you wish Gary from Costello Transport to send your groceries out to the museum.
  3. With prior arrangement we can unpack and refrigerate your groceries if you are not arriving for a few days.

## Contact details for our local grocery stores, butchery and bakery below:

### Meads Foodworks

Cnr Boonkai & Chulungra Streets, Quilpie Qld 44880

Opens: Monday-Friday 8.45am-5.45pm  
Saturday 8.45am-12pm

Phone: 07 4656-1188

Fax: 07 4656-1146

Email: [trevor.mead@bigpond.com](mailto:trevor.mead@bigpond.com)

Website: [www.foodworks.com.au](http://www.foodworks.com.au)

### Paulsen Bros "Friendly Grocer"

Cnr Buln Buln and Jabiru Streets, Quilpie, Qld 4480

Opens: Monday-Friday 8.30am to 6pm  
Saturday 8.30am to Midday  
Sunday 9am to 11.30am

Phone: 07 4656-1377

Fax: 07 4656-2000

Mobile: 0488 731 079 (David)

Email: [sales@paulsenbros.com.au](mailto:sales@paulsenbros.com.au)

# FOSSIL PREPARATION INFORMATION SHEET

---



## **Quilpie Butchery**

Buln Buln Street, Quilpie, Qld 4480

Opens: Monday – Friday 8am-5pm  
Saturday 7.30-11am

Phone: 07 4656-1126

Fax: 07 4656-2363

Mobile: 0427 300 021

Email: [cdgrmccconnell@bigpond.com](mailto:cdgrmccconnell@bigpond.com)

## **Quilpie Bakery**

41 Brolga St, Quilpie QLD 4480

Opens: Monday – Friday 7am-3pm  
Saturday 8am-12am  
Sunday 1<sup>st</sup> April – last Sunday in September 8am-12am

Phone: (07) 4656-1151

Fax: (07) 4656-1327

Email: [offshears.bakery@bigpond.com](mailto:offshears.bakery@bigpond.com)

For more information about the museums on-site accommodation visit the ENHM webpage [On-site Stays](#).

# FOSSIL PREPARATION INFORMATION SHEET



## STAY IN EROMANGA & EAT OUT

### Eromanga Royal Hotel

- 3 ensuited rooms
- 4 rooms with shared bathroom
- Lunch and dinners 7 days a week
- Pizzas only Thursday night
- Saturday night community charity BBQ

Contact Scott Walker  
Phone: 07 4656-4837  
Email: eromangaroyal@yahoo.com.au

### Eromanga Motel/Café & Caravan Park

- 8 motel rooms
- 8 powered caravan sites
- 8 unpowered sites.

Phone: (07) 4656-3276  
Fax: (07) 4656-4617  
Email: manager@eromanga188.com  
Facebook:

<https://www.facebook.com/EromangaMotel/>

## HOW DO I GET THERE?

For all your questions about travel to Eromanga visit the ENHM webpage [VISIT - HOW TO GET THERE](#).

